



NON-DESTRUCTIVE TECHNOLOGY

over
15 YEARS
In NDT

OWN ASSETS

- Measurement centre
- Training center
- Production facility
- NDT laboratory

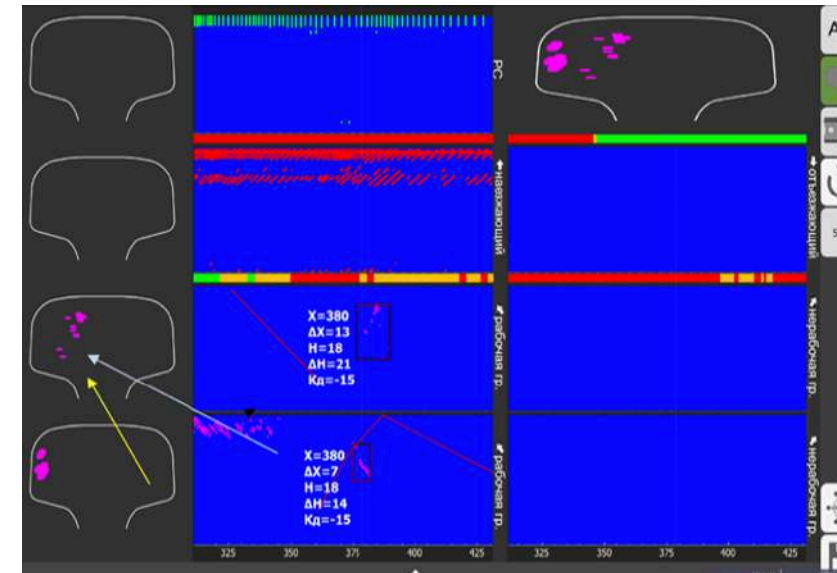
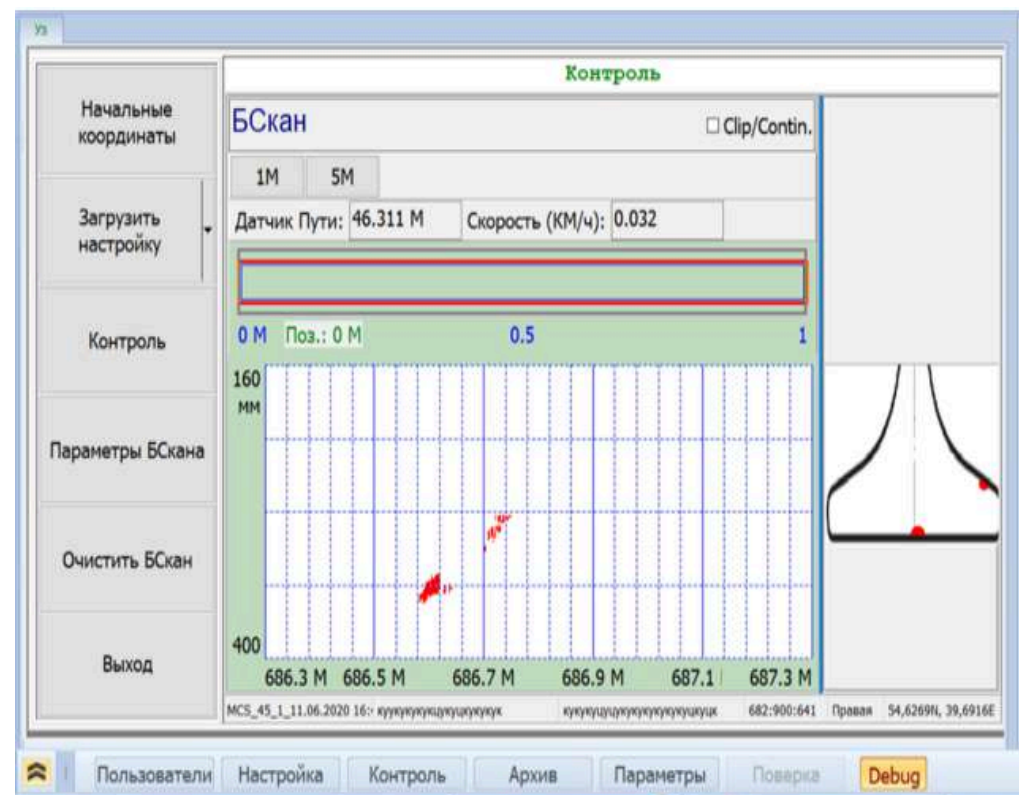
Anatoly Slyadnev
General Director

INNOVATIVE SOLUTIONS FOR RAIL DIAGNOSTICS

TOMOGRAFIC UD4-TM 2.69

Universal flaw detector
to search for flaws,
including corrosion hot-spots
originating in the base and flange
of rails from the running surface

WORLD NEWS!



CHAMELEON 32+(16/64)

Ultrasonic phased array flaw detector
for selective or complete inspection
of railway rails, including
switches and weld joints

**OBJECTIVE INSPECTION
WITH 3D VISUALIZATION**

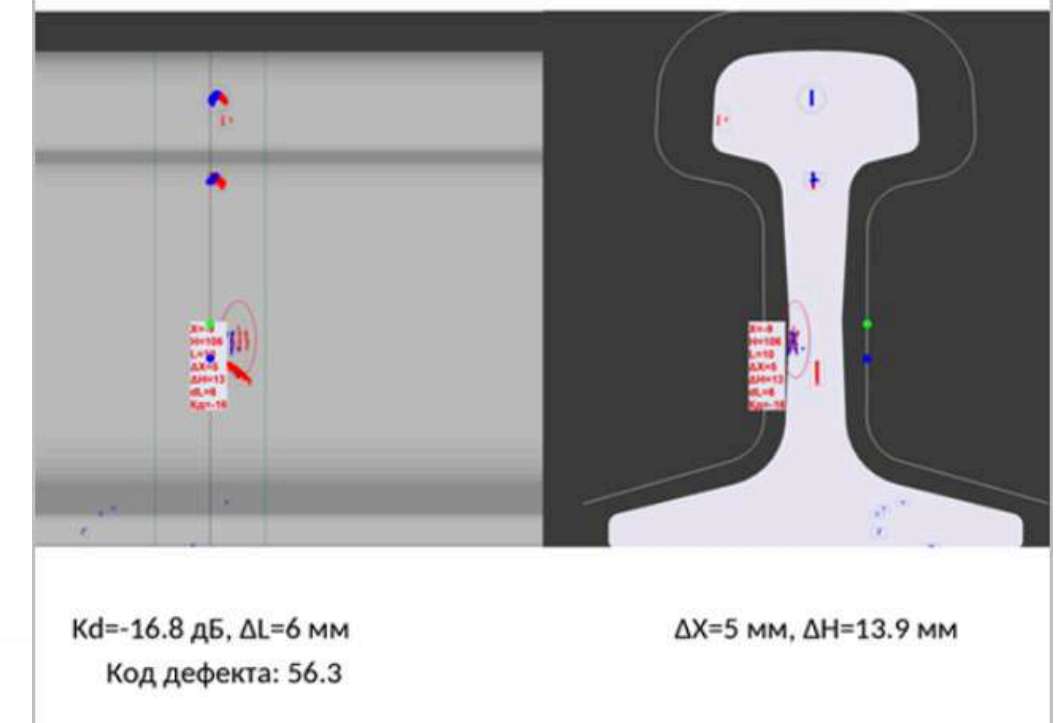
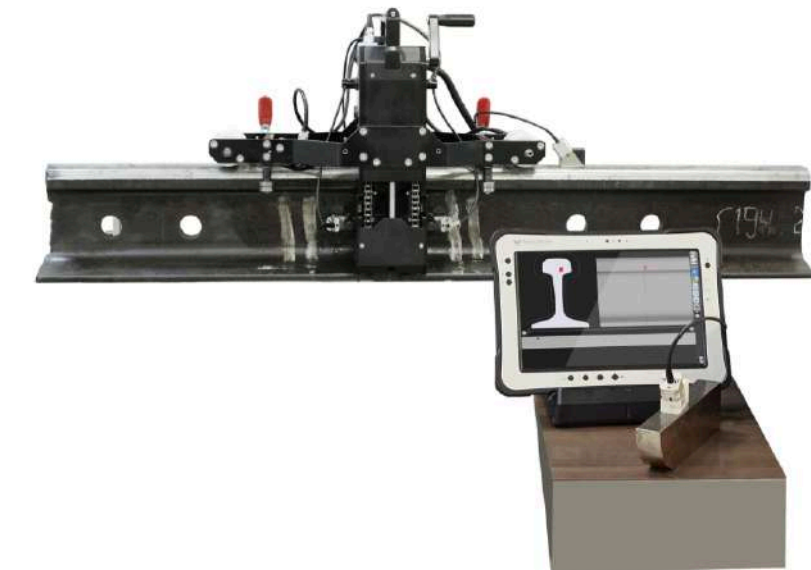
PHASED ARRAY TRANSDUCERS

Wide range of phased array
and refractive prism probes



KALMAR 16/64

Specialized ultrasonic phased array tool for non-destructive testing
of weld rail joints of electrocontact and aluminothermic welding



COMPLETED PROJECTS

Manual inspection tools

Composite materials
flaw detector

DAMI C09

Designed for nondestructive testing of composite materials. Combines impedance, shock and eddy-current NDT methods and designed to detect delamination, starved spots and other integrity defects, cellular structures and laminated structures, corrosion sources, surface and internal defects in non-ferromagnetic materials.

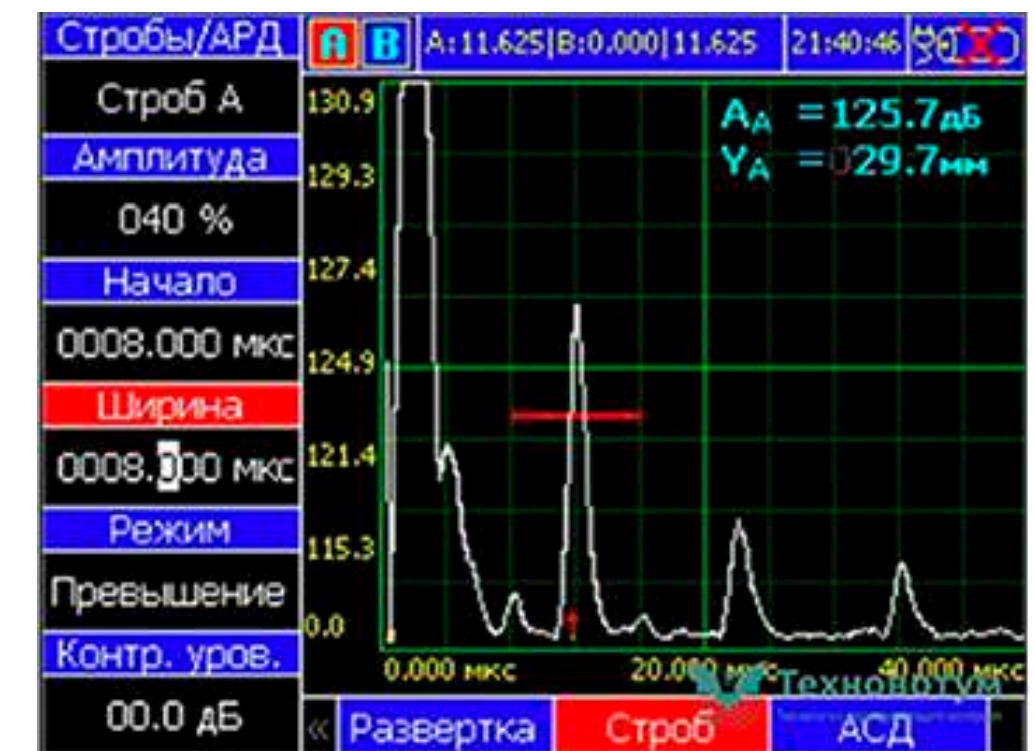


COMPLETED PROJECTS

Manual inspection tools

UD4-TM

Universal flaw detector which meets requirements of a particular user. Depending on selected and running application, the tool can perform the functions of various nondestructive testing tools such as a flaw detector, s thickness gauge, a tensiometer, etc.



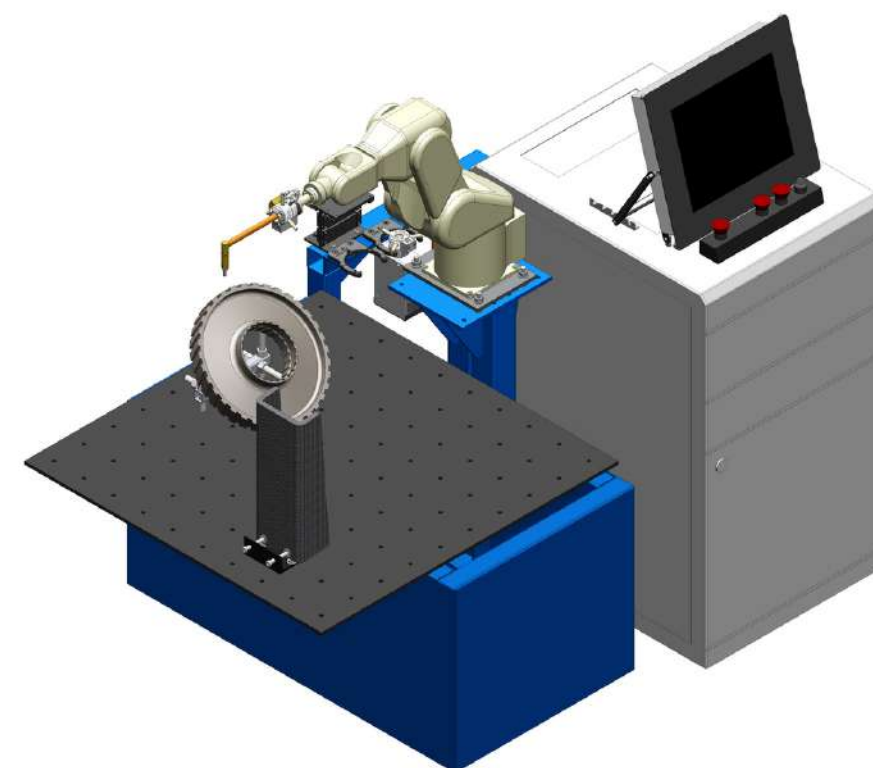
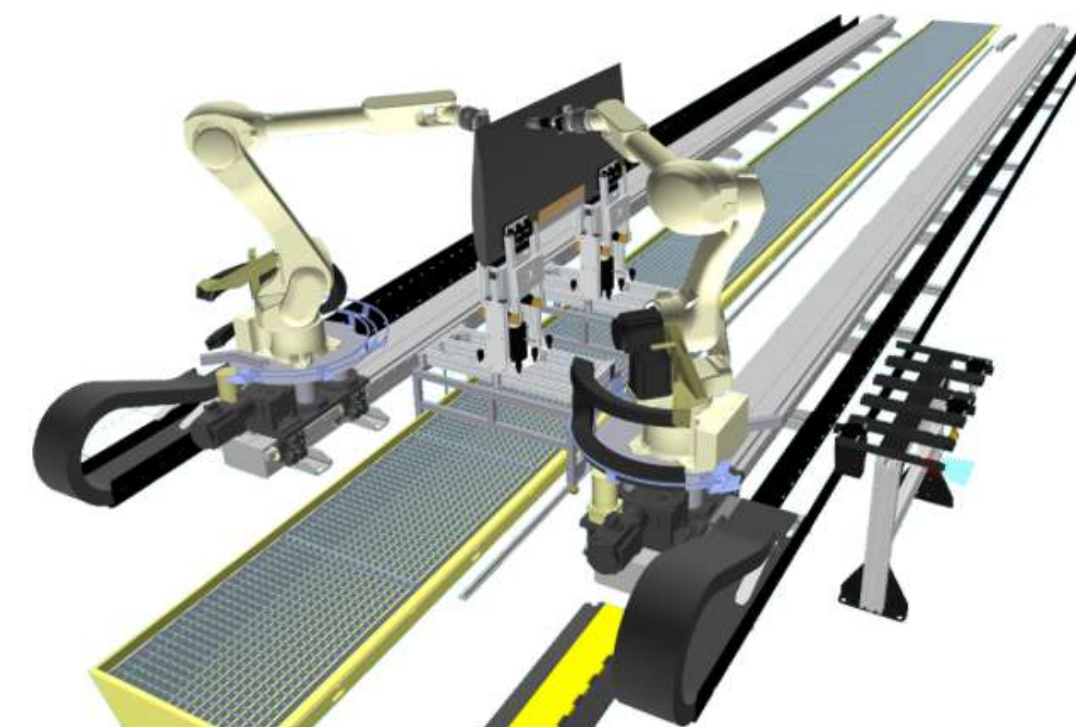
Universal flaw detector
UD4-TM "Tomographic"



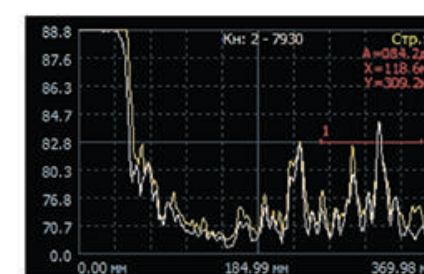
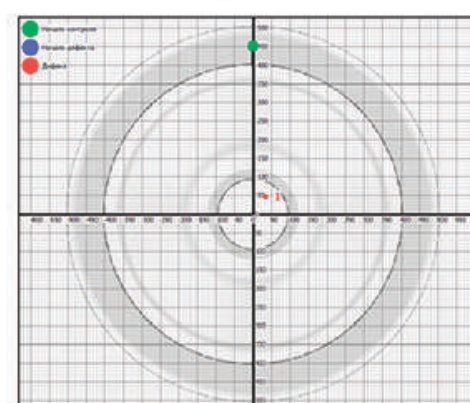
ROBOSCOPE VTM-5000

Robotic system

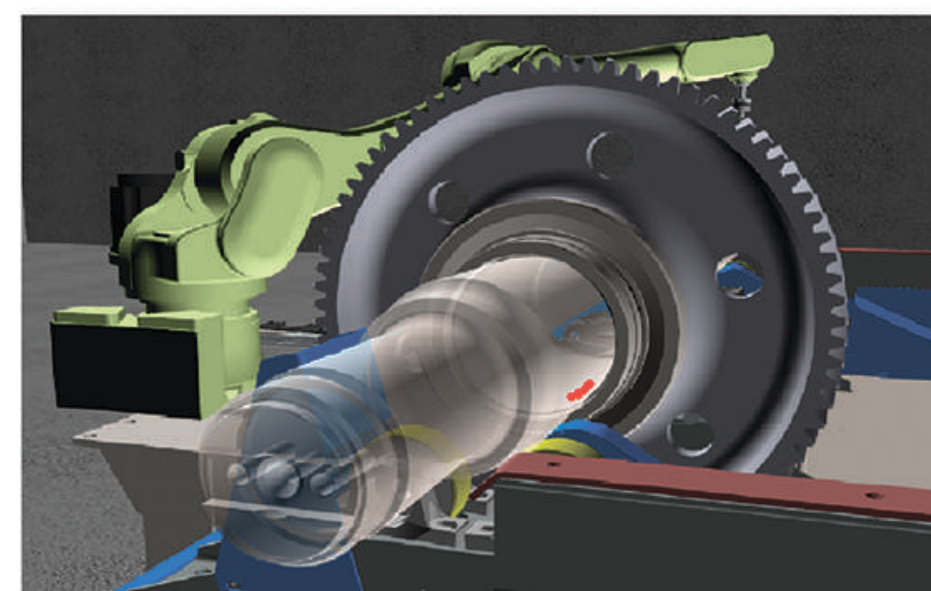
The line of robotic test benches Roboscop VTM-5000 is designed for automated measurement of geometric parameters and complex nondestructive testing of industrial products such as: wagon wheelsets, axles, car bogies and other parts.



Зона: ось, подступичная часть



X	0.00 мм
Y	0.00 мм
Глубина	281.75 мм



Manual inspection tools:



Universal flaw detector UD4-TM



Composite materials flaw detector DAMI



Probes for all types of inspection methods



Scanning devices

Robotic systems:



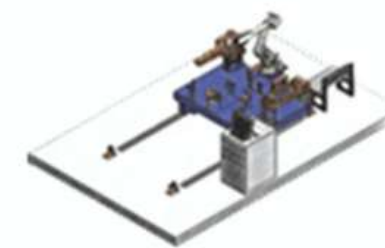
Rail welded joints inspection



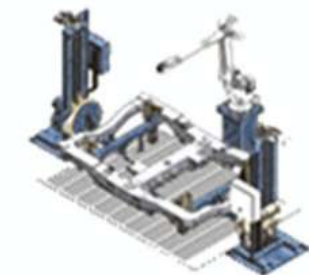
Motor and subway parts inspection



Subway wage wheels hollow shaft inspection



Draw- buffing couplers inspection



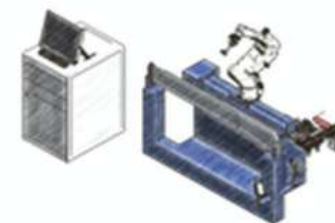
Cartruck frame inspection



Wheel sets inspection



Wheel set shafts i..



Composite materials testing



Aviation parts inspection

Metrological assurance

Accredited Metrology laboratory for verification of ultrasonic, eddy current, magnetic flaw detectors and adjusting samples under Certificate of accreditation No. RA.RU.311193



Robotic technologies center

In cooperation with our business partner "Kawasaki Robotics" we opened the first Russian Robotic Technologies Center. The center's activities are carried out in accordance with the license of the Ministry of Education and Science of Russian Federation and the patronage of Department of science, industrial policy and entrepreneurship of Moscow



Advanced training of specialists,

qualification and requalification of specialists in various fields of nondestructive testing (ultrasonic testing, magnetic testing, eddy current testing, etc.)



CONTACTS:
www.votum.ru



Anatoly Slyadnev
General Director
Tel.: +7(926) 630 20 02
E-mail: technovotum@gmail.com

